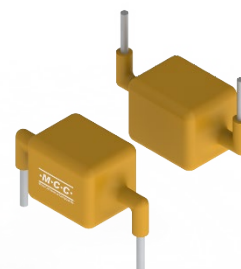


## Axial Leaded-10KA Transient Voltage Suppression Diode

### Features

- 10KA peak pulse current capability at 8/20μs pulse
- Transient protection to:
  - IEC 61000-4-2 (ESD) ±30 kV (Air), ±30 kV (Contact)
- Excellent clamping capability
- Sharp breakdown voltage
- Bi-directional
- Symmetric in leads width for easier soldering during assembly



AK-Y



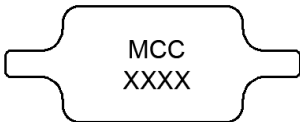

### Applications

- Server PSU & BBU
- Communication Equipment
- Energy Storage System

### Mechanical Data

- Package: AK-Y
- Halogen Free. "Green" Device (Note1)
- Epoxy Meets UL 94 V-0 Flammability Rating
- Lead Free Finish/RoHS Compliant ("P" Suffix Designates RoHS Compliant. See Ordering Information)
- Weight: Contact manufacturer

### Body Marking and Pin Layout

Description	Simplified Outline	Functional Diagram
Bi-directional		

XXXX= Marking code

### Ordering Information

Product Name	Packing Type	Qty/Box
AK10-XXXC-Y -BP	Box	56

For packaging details, visit our website at <https://www.mccsemi.com/Package/List>

## Axial Leaded-10KA Transient Voltage Suppression Diode

### Maximum Ratings (T<sub>A</sub>=25°C unless otherwise specified)

Parameter	Symbol	Rating	Unit
Peak Pulse Current with a 8/20μs	I <sub>PP</sub>	10	kA
Operating Junction Temperature Range	T <sub>J</sub>	-55 to 150	°C
Storage Temperature Range	T <sub>STG</sub>	-55 to 150	°C

Note:

1. Halogen free "Green" products are defined as those which contain <900ppm bromine, <900ppm chlorine (<1500ppm total Br + Cl) and <1000ppm antimony compounds.

### Electrical Characteristics (T<sub>A</sub>=25°C unless otherwise specified)

MCC Part Number	Reverse Stand-off Voltage	Breakdown Voltage V <sub>BR</sub> @ I <sub>T</sub>		Test Current	Maximum Clamping Voltage @I <sub>PP</sub>	Maximum Peak Pulse Current @8/20us (Note2)	Maximum Reverse Leakage @V <sub>R</sub>	Marking Code
	V <sub>RMW</sub> (V)	Min (V)	Max (V)	I <sub>T</sub> (mA)	V <sub>C</sub> (V)	I <sub>PP</sub> (kA)	I <sub>R</sub> (μA)	
AK10-380C-Y	380	401	443	10	570	10	10	AK10-380C
AK10-430C-Y	430	440	490	10	625	10	10	AK10-430C
AK10-560C-Y	560	585	650	10	790	10	10	AK10-560C

Note:

2. Using 8/20μs wave shape as defined in IEC 61000-4-5.

## Axial Leaded-10KA Transient Voltage Suppression Diode

### Curve Characteristics

Fig. 1 - Peak Pulse Power Rating Curve

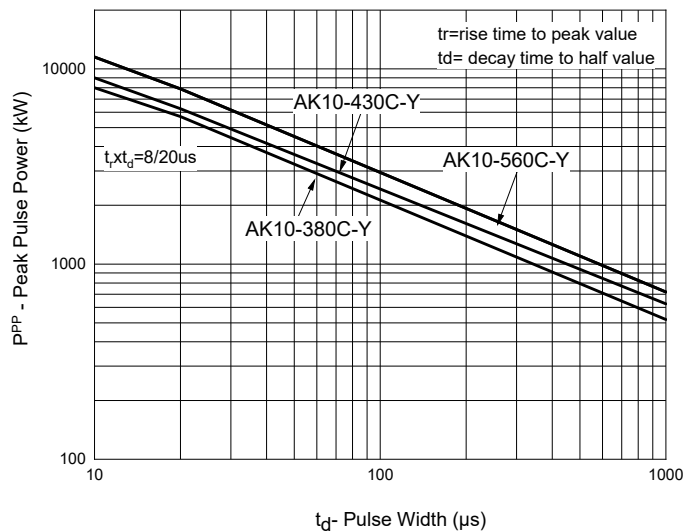


Fig. 2 - Pulse Derating Curve

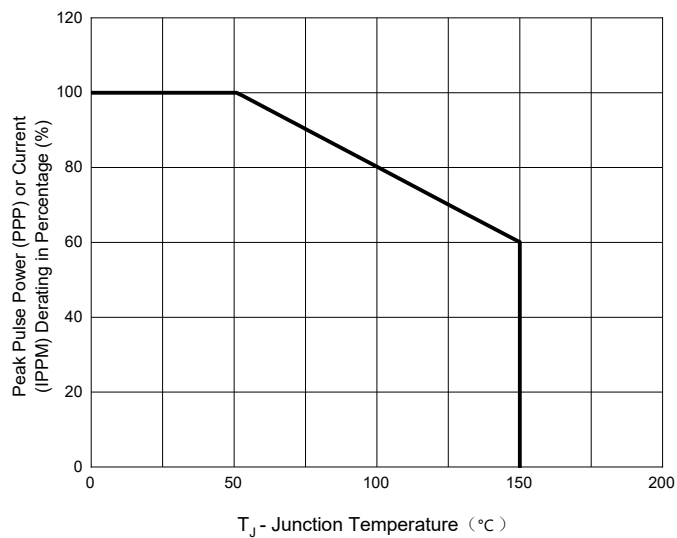
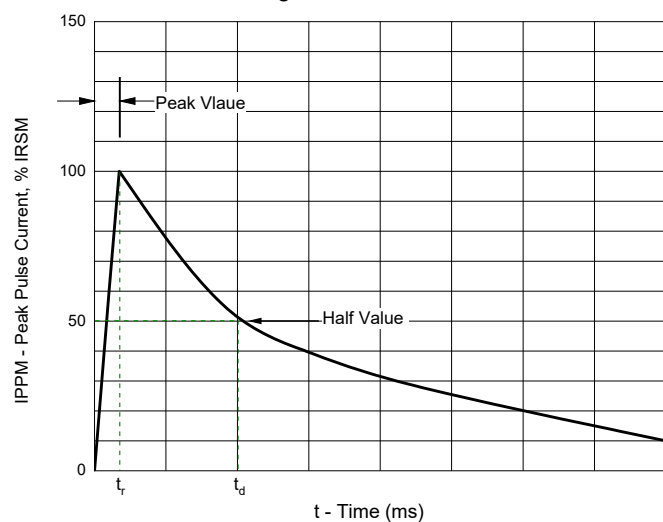
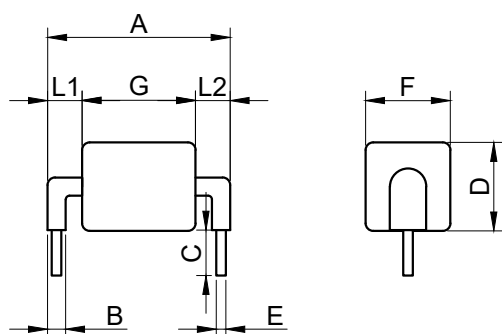


Fig. 3 - Pulse Waveform

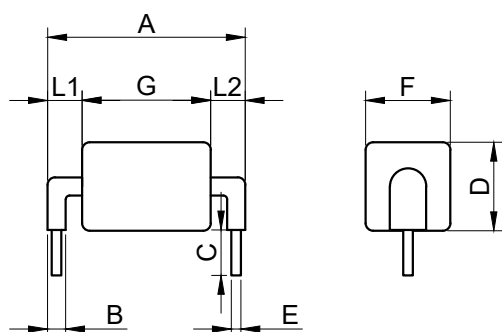


## Package Outline



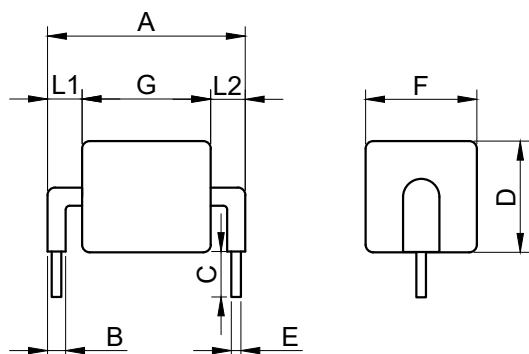
DIM	INCH		MM		NOTE
	MIN	MAX	MIN	MAX	
A	0.911	0.990	23.15	25.15	
B	0.071	0.118	1.80	3.00	
C	0.197	0.276	5.00	7.00	
D	0.394	0.528	10.00	13.40	
E	0.046	0.054	1.17	1.37	
F	0.394	0.488	10.00	12.40	
G-380C	0.394	0.591	10.00	15.00	
G-430C	0.394	0.591	10.00	15.00	
G-560C	0.630	0.827	16.00	21.00	
L1/L2	L1=L2 tolerance +/-0.047inch(1.2mm)				

Note:Applicable to the AK3-Y series



DIM	INCH		MM		NOTE
	MIN	MAX	MIN	MAX	
A	0.911	0.990	23.15	25.15	
B	0.071	0.118	1.80	3.00	
C	0.197	0.276	5.00	7.00	
D	0.437	0.571	11.10	14.50	
E	0.046	0.054	1.17	1.37	
F	0.437	0.531	11.10	13.50	
G-380C	0.591	0.787	15.00	20.00	
G-430C	0.591	0.787	15.00	20.00	
G-560C	0.630	0.827	16.00	21.00	
L1/L2	L1=L2 tolerance +/-0.047inch(1.2mm)				

Note:Applicable to the AK6-Y series



DIM	INCH		MM		NOTE
	MIN	MAX	MIN	MAX	
A	0.911	0.990	23.15	25.15	
B	0.071	0.118	1.80	3.00	
C	0.197	0.276	5.00	7.00	
D	0.531	0.665	13.50	16.90	
E	0.046	0.054	1.17	1.37	
F	0.531	0.626	13.50	15.90	
G-380C	0.591	0.787	15.00	20.00	
G-430C	0.622	0.819	15.80	20.80	
G-560C	0.630	0.827	16.00	21.00	
L1/L2	L1=L2 tolerance +/-0.047inch(1.2mm)				

Note:Applicable to the AK10-Y series

## DISCLAIMERS

Micro Commercial Components Corp. (MCC) reserves the right to make changes to any product without prior notice, including corrections, modifications, enhancements, improvements, or other changes. MCC's products are not designed, authorized, or warranted for use in medical, military, aircraft, space, or life support equipment, nor in applications where failure or malfunction of an MCC product can reasonably be expected to result in personal injury, death, or severe property or environmental damage. MCC does not assume liability for any application or use of the products described herein, nor does it convey any license under its patent rights or those of others. Users of MCC's products in any such application assume all risks associated with their use and agree to hold MCC and all companies whose products are represented on our website harmless against any damages. MCC's products are not authorized for use as critical components in life support devices or systems without the express written approval of MCC.

Counterfeiting of semiconductor parts is an increasing problem in the industry. MCC is taking strong measures to protect both ourselves and our customers from counterfeit products. We strongly encourage customers to purchase our parts either directly from MCC or through Authorized Distributors, who are listed by country on our website. Products purchased directly from MCC or from Authorized Distributors are genuine, have full traceability, and meet our quality standards for handling and storage. MCC will not provide warranty coverage or any other assistance for parts bought from Unauthorized Sources.

This document, along with the item(s) described within, may be subject to export control regulations. Exporting these items may require prior authorization from national authorities.

**Terms and Conditions** - MCC products are sold subject to the general terms and conditions of commercial sale, as published at <https://www.mccsemi.com/Home/TermsAndConditions>.