

## Test Report



Page 1 of 7

Report No. A2250274502101004

Company Name shown on Report JIANGSU MICRO COMMERCIAL COMPONENTS CO., LTD.

Address NO.68, XINGANQUAN ROAD, HANJIANG DISTRICT, YANGZHOU, CHINA

The following sample(s) and sample information was/were submitted and identified by/on the behalf of the applicant

Sample Name BONDING PACKAGE DEVICES-Al wire/ribbon bonding  
Color Black body  
Material BONDING PACKAGE DEVICES-Al wire/ribbon bonding  
Sample Received Date Apr. 24, 2025  
Testing Period Apr. 24, 2025 to Apr. 29, 2025

Test Requested As specified by client, to test Lead (Pb), Cadmium (Cd), Mercury (Hg), Hexavalent Chromium (Cr(VI)), Polybrominated Biphenyls (PBBs), Polybrominated Diphenyl Ethers (PBDEs), Phthalates (DBP, BBP, DEHP, DIBP) in the submitted sample(s).

Test Method Please refer to the following page(s).

Test Result(s) Please refer to the following page(s).



Approved by



Chen kaimin  
Lab Manager

Date

May 8, 2025

No. R794242806

Centre Testing International Pinbiao(Shanghai) Co., Ltd.

No.1351, Wanfang Road, Minhang District, Shanghai, China

# Test Report

Report No. A2250274502101004

Page 2 of 7

**Test Method**

Test Item(s)	Test Method	Measured Equipment(s)
Lead (Pb)	IEC 62321-5:2013	ICP-OES
Cadmium (Cd)	IEC 62321-5:2013	ICP-OES
Mercury (Hg)	IEC 62321-4:2013+AMD1:2017 CSV	ICP-OES
Hexavalent Chromium (Cr(VI))	IEC 62321-7-2:2017 and/or determination of Total Chromium by IEC 62321-5:2013	UV-Vis/ICP-OES
Polybrominated Biphenyls (PBBs)	IEC 62321-6:2015	GC-MS
Polybrominated Diphenyl Ethers (PBDEs)	IEC 62321-6:2015	GC-MS
Phthalates (DBP, BBP, DEHP, DIBP)	IEC 62321-8:2017	GC-MS

# Test Report

Report No. A2250274502101004

Page 3 of 7

**Test Result(s)**

Tested Item(s)	Result	MDL
	004	
Lead (Pb)	3916 mg/kg*	2 mg/kg
Cadmium (Cd)	N.D.	2 mg/kg
Mercury (Hg)	N.D.	2 mg/kg
Hexavalent Chromium (Cr(VI))	N.D.	8 mg/kg
Tested Item(s)	Result	MDL
	004	
<b>Polybrominated Biphenyls (PBBs)</b>		
Monobromobiphenyl	N.D.	5 mg/kg
Dibromobiphenyl	N.D.	5 mg/kg
Tribromobiphenyl	N.D.	5 mg/kg
Tetrabromobiphenyl	N.D.	5 mg/kg
Pentabromobiphenyl	N.D.	5 mg/kg
Hexabromobiphenyl	N.D.	5 mg/kg
Heptabromobiphenyl	N.D.	5 mg/kg
Octabromobiphenyl	N.D.	5 mg/kg
Nonabromobiphenyl	N.D.	5 mg/kg
Decabromobiphenyl	N.D.	5 mg/kg
Tested Item(s)	Result	MDL
	004	
<b>Polybrominated Diphenyl Ethers (PBDEs)</b>		
Monobromodiphenyl ether	N.D.	5 mg/kg
Dibromodiphenyl ether	N.D.	5 mg/kg
Tribromodiphenyl ether	N.D.	5 mg/kg
Tetrabromodiphenyl ether	N.D.	5 mg/kg
Pentabromodiphenyl ether	N.D.	5 mg/kg
Hexabromodiphenyl ether	N.D.	5 mg/kg
Heptabromodiphenyl ether	N.D.	5 mg/kg
Octabromodiphenyl ether	N.D.	5 mg/kg
Nonabromodiphenyl ether	N.D.	5 mg/kg
Decabromodiphenyl ether	N.D.	5 mg/kg

# Test Report

Report No. A2250274502101004

Page 4 of 7

## Test Result(s)

Tested Item(s)	Result	MDL
	004	
<b>Phthalates (DBP, BBP, DEHP, DIBP)</b>		
Dibutyl phthalate (DBP) CAS#:84-74-2	N.D.	50 mg/kg
Butyl benzyl phthalate (BBP) CAS#:85-68-7	N.D.	50 mg/kg
Di-(2-ethylhexyl) phthalate (DEHP) CAS#:117-81-7	N.D.	50 mg/kg
Diisobutyl phthalate (DIBP) CAS#:84-69-5	N.D.	50 mg/kg

## Sample/Part Description

No.	CTI Sample ID	Description
1	004	Black body(Tested as a whole)

**Remark:** The sample(s) had been dissolved totally tested for Lead, Cadmium, Mercury.  
 \*=According to the client's statement, lead mainly comes from the high melting temperature type solders. Lead in high melting temperature type solders (i.e. lead- based alloys containing 85 % by weight or more lead) is exempted from the restriction, with reference to EU Directive 2011/65/EU annex III Exemption Applications 7(a).  
 The sample(s) was tested as a whole, because it's impossible to disassemble or separate it by current equipment and technology. The result(s) shown on this report may be different from the content of any homogeneous material.

-MDL = Method Detection Limit

-N.D. = Not Detected (<MDL)

-mg/kg = ppm = parts per million

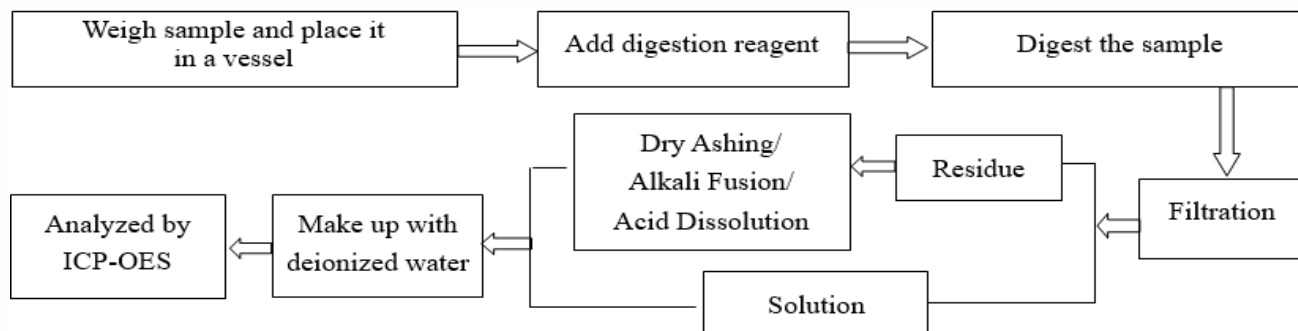
# Test Report

Report No. A2250274502101004

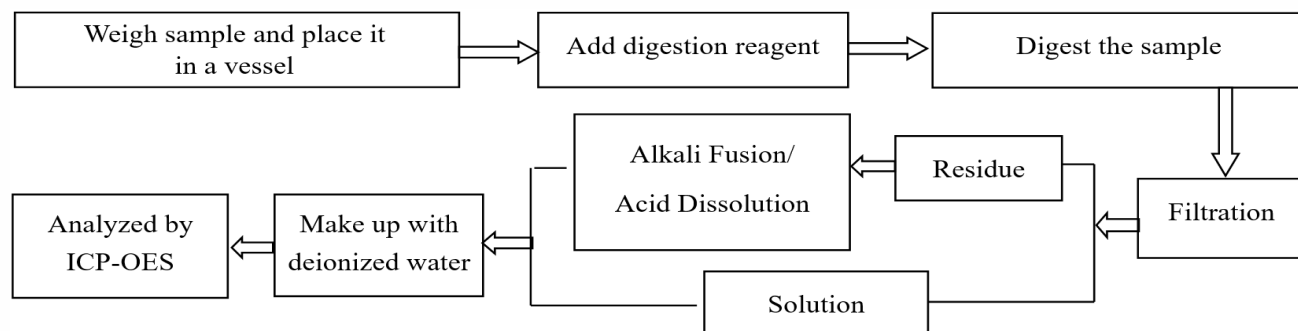
Page 5 of 7

## Test Process

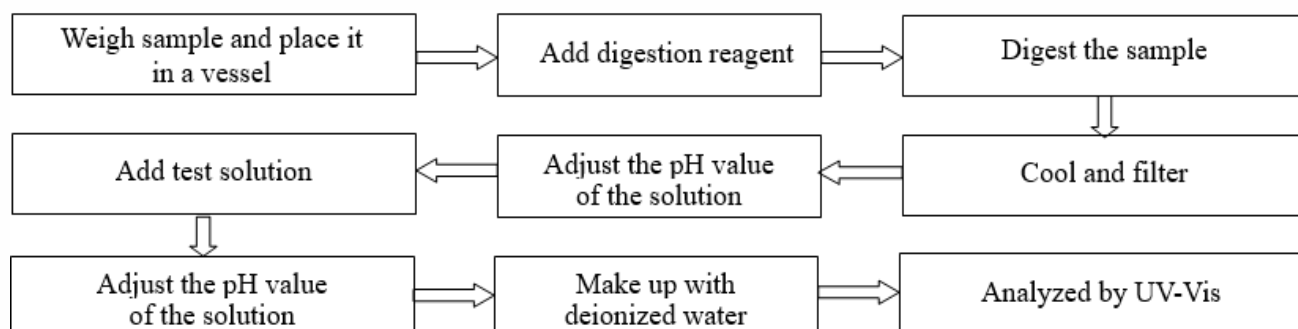
### 1. Lead (Pb), Cadmium (Cd), Chromium (Cr)



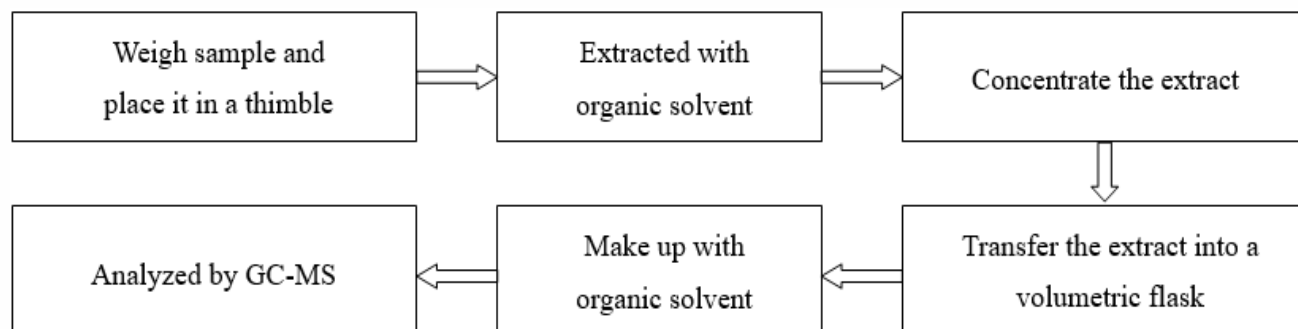
### 2. Mercury (Hg)



### 3. Hexavalent Chromium (Cr(VI))



### 4. Polybrominated Biphenyls (PBBs), Polybrominated Diphenyl Ethers (PBDEs)

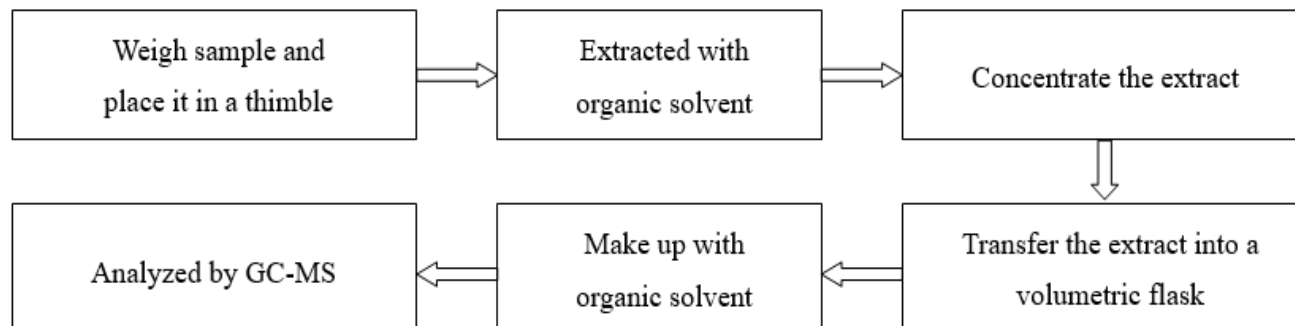


# Test Report

Report No. A2250274502101004

Page 6 of 7

## 5. Phthalates (DBP, BBP, DEHP, DIBP)

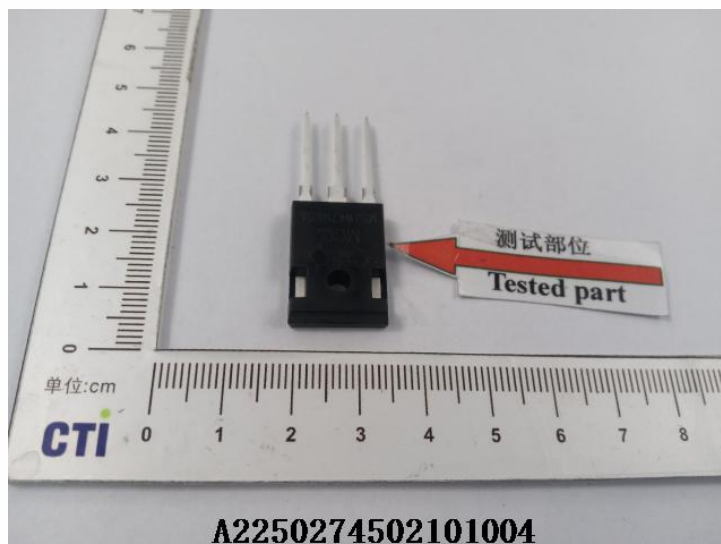


# Test Report

Report No. A2250274502101004

Page 7 of 7

## Photo(s) of the sample(s)



### Statement:

1. This report is considered invalid without approved signature, special seal and the seal on the perforation;
2. The Company Name shown on Report and Address, the sample(s) and sample information was/were provided by the applicant who should be responsible for the authenticity which CTI hasn't verified;
3. The result(s) shown in this report refer(s) only to the sample(s) tested;
4. Unless otherwise stated, the decision rule for conformity reporting is based on Binary Statement for Simple Acceptance Rule (w=0) stated in ILAC-G8:09/2019 / CNAS-GL015:2022;
5. Without written approval of CTI, this report can't be reproduced except in full;
6. In case of any discrepancy between the English version and Chinese version of the testing reports (if generated), the Chinese version shall prevail.

\*\*\* End of report \*\*\*

## Appendix

### Client Reference Information

0201, 0201-A, A-405, AK, CSP1610-6, D2-PAK, DFN-10, DFN1006-2, DFN1006-2L, DFN1006-2L(SWF), DFN1006-3, DFN1006-3A, DFN1006-3B, DFN1010B-6, DFN1110-3(SWF), DFN1308-5, DFN1510-6, DFN1510-6A, DFN1608-2, DFN1610-2, DFN1610-6, DFN1616-6, DFN1616-6L, DFN2010-5(SWF), DFN2018-6L, DFN2020-3A, DFN2020-3L, DFN2020-6J, DFN2020-6JA, DFN2020-6L, DFN2020-6LE, DFN2020-6S, DFN2020-6T, DFN2510-10, DFN2510-10(SWF), DFN2626-10, DFN3020-10, DFN3030-4L, DFN3333, DFN3333-8, DFN3333-8(SWF), DFN3333-D, DFN4120-10, DFN5060, DFN5060-8D, DFN5060-C, DFN5060-DSC, DFN5515-18, DFN8080A, DO-201AE, DO-218AB, DO-41, DPAK, ITO-220AB, ITO-220AC, LPAK56E, PDFN3333, PDFN3333-B, PDFN5060-8D, RS-4L, RS-6, SOP-8, SOT-323S, STO-220, TO-220, TO-220AB, TO-220AB(B), TO-220AB(H), TO-220AC, TO-220F, TO-247, TO-247-4, TO-247-4L, TO-247AB, TO-247AB(E), TO-247AD, TO-247Plus, TO-262L, TO-263-7, TO-263-7L, TO-263-7L(A), TO-263AC, TO-264P, TOLL-8L, TOLL-8L-KS, TSSOP-8, DFN1006-3L

### Statement:

1. The Appendix Information was/were provided by the applicant who should be responsible for the authenticity which CTI hasn't verified.
2. The Appendix Information is/are the supplement(s) for the Report A2250274502101004.