

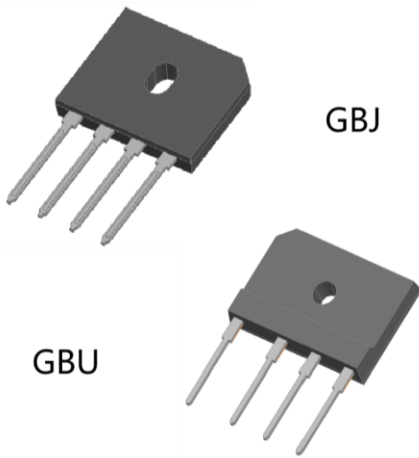
Powered by Service

Complete Discrete Semiconductor Solutions

600V, 800V Low Vf Bridge Rectifier

MCC's low Vf bridge rectifier benefits include low Vf, low IR and high IFSM

MCC's offer two types of technologies in Bridge Rectifier design which is Mesa technology and Multicell Planar technology. Multicell Planar Technology bridge rectifier has gone through multiple times of lithographic design which able to improve overall performance such as lower down the forward voltage drop and more stable leakage current at higher temperature levels. Meanwhile, it increases the peak forward current and system reliability. Planar Technology Low Vf bridge rectifier always show the suffix 'L' in the middle of ordering code, for example : GBU15L06-BP. For cost efficient solution, customers may select Mesa technology which the suffix 'L' always at the end of the ordering code, for example : GBJ2508L-BP

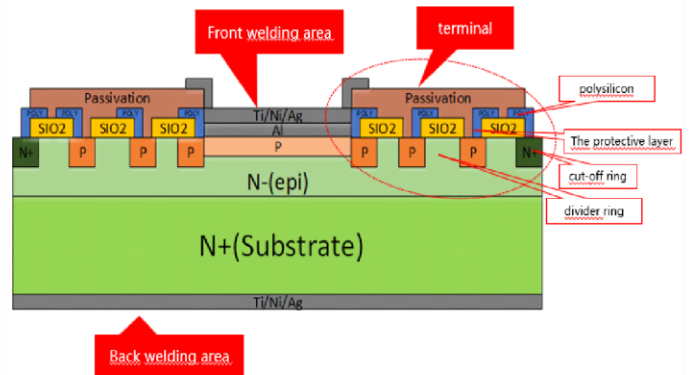


FEATURES

- Low forward voltage drop
- High Current Capability
- High Reliability
- Multiple times of lithographic design to improve overall performance
- Available in GBU, GBJ package

APPLICATIONS

- AC/DC Power Supply



PN	package	Chip size	I	Ifsm	Vf	Vr
GBJ15L06	GBJ	115mil	15A	220	<0.92V@IF=7.5A	600V
GBJ25L06	GBJ	135mil	25A	360	<0.92V@IF=12.5A	600V
GBU15L06	GBU	115mil	15A	220	<0.92V@IF=7.5A	600V
GBU25L06	GBU	135mil	25A	360	<0.92V@IF=12.5A	600V

